



# SONY A7 (ILCE-7)

By: Steven Barrios

# SHUTTER SPEED :

## Low Shutter Speed:

It lets more light through the sensor by closing the curtain slower (it makes everything blurry)

## High Shutter Speed:

It lets through the sensor by closing the curtain faster (It freezes the action)

# HOW TO CHANGE THE SHUTTER SPEED ?



- Move the dial next to the plus(+)magnified icon. Move the dial to the right in order to Have a fast shutter speed. Move it to the left In order to get a slower shutter speed.

## SHUTTER SPEED EXAMPLES



Low Shutter Speed  
(4sec.)



High Shutter Speed  
1/160 sec

FLASH WB:



F

# FLASH WB



# CLOUDY



# CLOUDY WB





# FLUORESCENT WB



# DAYLIGHT WB



# FLUORESCENT WB



# APERTURE

It controls how much light goes through the lens

Low aperture number(f): more light goes through the lens (more bokeh )

High aperture number(f): less light goes through the lens (less bokeh)

# HOW TO CHANGE THE APERTURE?



- Use the dial at the top of the grip Handle of the camera. Move the dial to the right to get a close aperture (higher f number). Move the dial to the left to get a open aperture (Lower f number)



Low Aperture  
(1.8f)

## APERTURE EXAMPLES



High aperture  
(8.0f)

# ISO

The ISO it basically means how sensitive is the sensor to the light

- Low ISO: More quality in your pictures
- High ISO: Less quality in your pictures

# HOW TO CHANGE ISO?

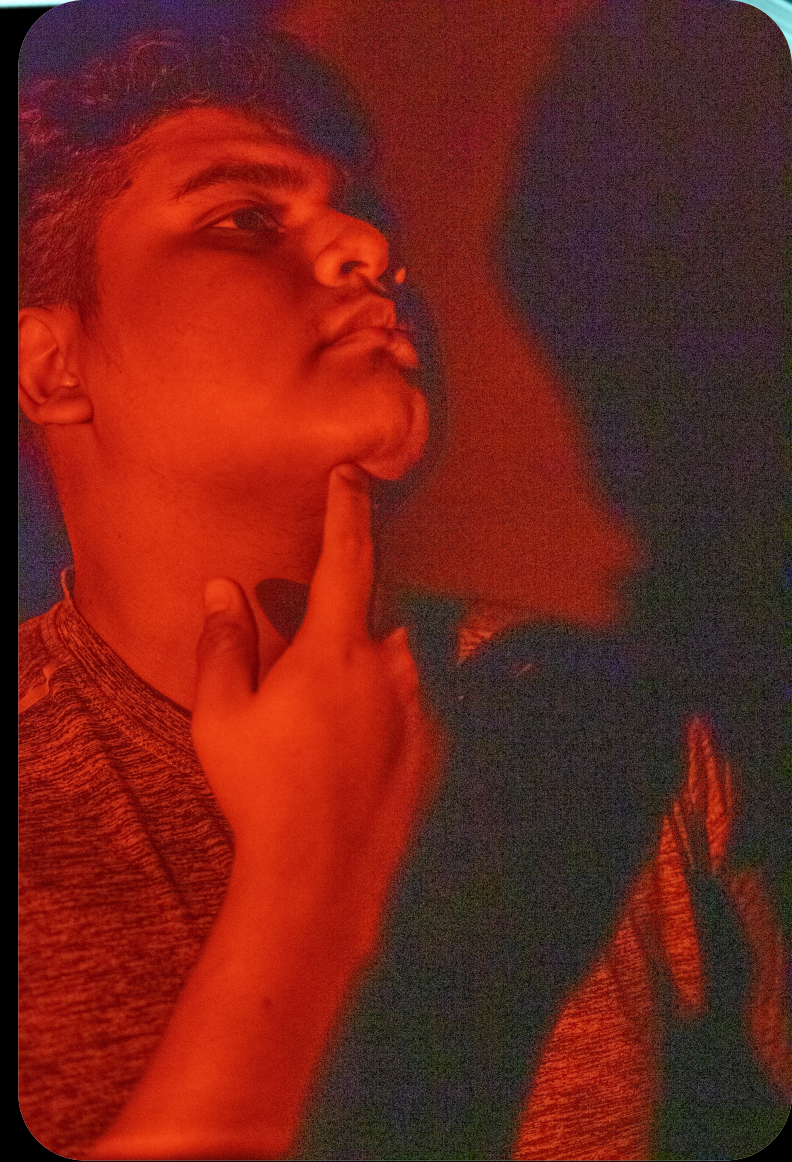


- Use the middle dial on the Camera in order to change the ISO, move the dial to the right in order to get a higher ISO. Move the dial to the left in order to get a lower ISO





Low ISO  
(100)



High ISO  
(25,000)

# MOVES AVAILABLE IN MY CAMERA :



- **P (Program Auto):**  
Allows you to shoot with the exposure adjusted automatically (both the shutter speed and the aperture value (F value)). Also you can select various settings using the menu.
- **A (Aperture Priority):**  
Allows you to adjust the aperture and shoot when you want to blur the background, etc.
- **S (Shutter Priority):**  
Allows you to shoot fast-moving subjects etc., by manually adjusting the shutter speed.
- **M (Manual Exposure):**  
Allows you to shoot still images with the desired exposure by adjusting the exposure (both the shutter speed and the aperture value (F value))

# BRACKETING

- The technique of using multiple photos with different exposures to get a balance image



Under exposure



Well expose



Over Expose

# MOVES AVAILABLE IN MY CAMERA II:



- **1/2(Memory recall):**  
Allows you to shoot an image after recalling often-used modes or numeric settings registered in advance.
- **(Movie):**  
Allows you to change the exposure mode for movie recording.
- **(S&Q Motion):**  
Allows you to shoot slow-motion and quick-motion movies.
- **(Scene Selection):**  
Allows you to shoot with preset settings according to the scene.